



NOTICE 02-001

It has come to the attention of the Foundation that there are check valve retainers not approved by the Foundation, which may be installed in the following Febco backflow prevention assemblies:

Double Check Valve Assemblies (DC)

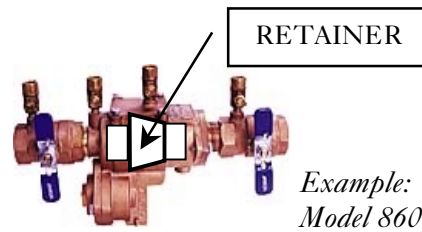
Model 850 1-1/4", 1-1/2", 2"

Model 850U 1-1/4", 1-1/2", 2"

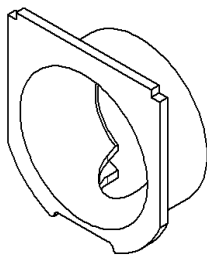
Reduced Pressure Principle Assemblies (RP)

Model 860 1-1/4", 1-1/2", 2"

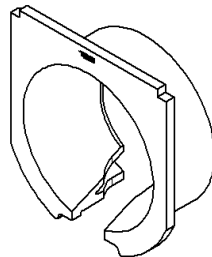
Model 860U 1-1/4", 1-1/2", 2"



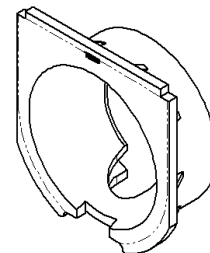
The subject check valve retainers are illustrated below:



Original Approved



Unapproved



Approved Replacement

The unapproved check valve retainer should not affect the normal operation of the assemblies, however, the unapproved retainer may not provide the needed support against a backpressure exceeding the maximum rated pressure of the assembly (i.e., greater than 175psi). If the second check valve module slides forward due to the backpressure condition, it may leak. Production units affected are identified as follows:

Model	Size	Starting Serial #
850/850U 860/860U	1-1/4"	A00951 and all "H" prefix
	1-1/2"	A05148 and all "H" prefix
	2"	A05403 and all "H" prefix

Should you have an assembly affected by this situation, please contact the Technical Service Department at Febco (559) 252-0791 for Foundation Approved replacement components.

19 April 2002